

CARBON MANAGEMENT ADVISORY

GHG Inventory
Carbon footprint reporting
Life Cycle Assessment
Climate and Sustainability Strategy

RCEE-NIRAS is a subsidiary of NIRAS A/S Company, founded in 1956 and is today a major Scandinavian multi-disciplinary consulting company with a staff of over 2,100 professionals. Building on its international experience, RCEE- NIRAS provides technical expertise and results-oriented project management focusing on climate change, green economy, grid integration of re-newables, using renewable energy as heat and power production and district energy (heat-ing/cooling), energy efficiency, resource efficiency in industrial processes, waste....



A. SCOPE OF SERVICE

- Advises and manages climate-related projects
- Design and development of GHG inventories (Scopes 1 and 2, with particular emphasis on Scope 3)
- Supports development of climate change strategy, action planning, and/or modeling of and setting science-based targets.
- Analysis of emission reduction measures (energy efficiency measures, renewable energy, decarbonized fuels).
- GHG emissions verification

B. GHG ACCOUNTING AND REPORTING STANDARD

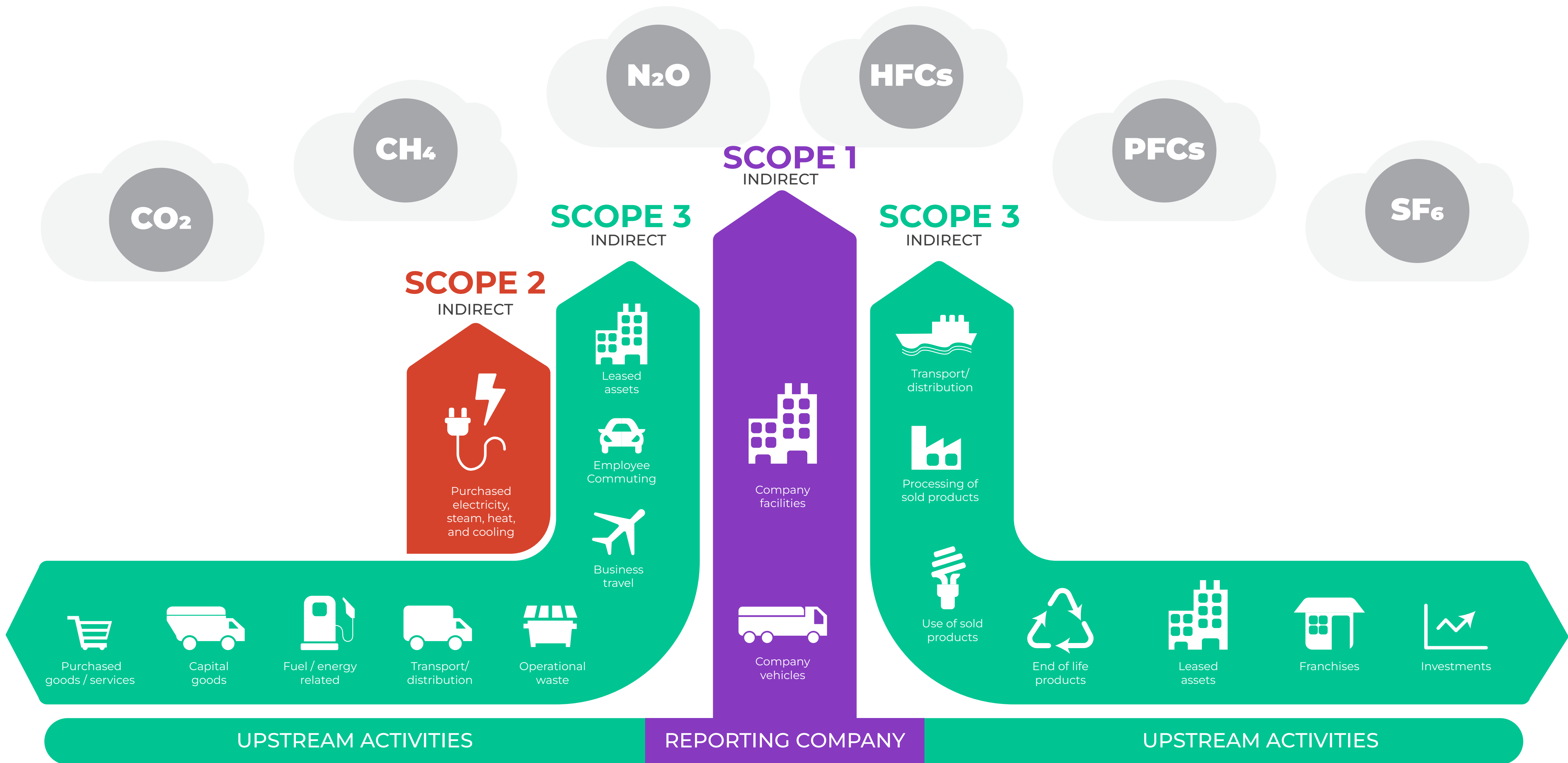
GHG Emissions will be accounted and reported according to GHG Protocol developed by the World Resources Institute (WRI) and the World Business Council on Sustainable Development (WBCSD) as well as the GHG emissions standard published by the International Organization for Standardization (ISO) (ISO 14064).

GHG emissions Scope:

- Scope 1 Direct GHG emissions
- Scope 2 Energy indirect GHG emissions
- Scope 3 Other indirect GHG emissions
- GHG emissions intensity
- Reduction of GHG emissions

For scope 3:

- Transportation
- Employee commuting
- Business Travel



1. Obtain senior management commitment
2. Decide on the target type
Set an absolute or intensity target?
3. Decide on the target boundary
Which GHGs to include?
Which direct and indirect emissions?
Which geographical operations?
Treat business types separately?
4. Choose the target base year
Use a fixed or rolling approach?
Use a single or multi-year approach?
5. Define the target completion date
Set a long-or short-term target?
6. Define the length of the target commitment period
Set a one-year or multi-year commitment period?
7. Decide on the use of offsets or credits
8. Establish a target double counting policy
How to deal with double counting of reductions across companies?
How does GHG trading affect target performance?
9. Decide on the target level
What is business-as-usual? How far to go beyond that?
How do all the above steps influence the decision?
10. Track and report progress
Make regular performance checks
Report information in relation to the target

Step in setting a GHG target
(Source: GHG Protocol)

C. GHG EMISSION INVENTORY ACTIVITIES

Task 1: Conduct GHG emissions inventory for base year using GHG protocol standard

- 1.1 Develop of collection data form, initial screening
- 1.2 Field trip and collectiong of data
- 1.3 Inventory and calculation of emissions
- 1.4 Prepare inventory report according to international standards
- 1.5 Present report to customer and finalize report based on customer's feedback

Task 2: Training awareness and setting up reporting system

- 2.1 Training awareness
- 2.2 Setting up documentation/ reporting system in accordance with international standards



THANK YOU

Room 901 Kham Thien Building, 193-195 Kham Thien, Dong Da, Hanoi, Viet Nam
Tel: +84 243 7868592
Fax: +84 243 7868593
Email: rcee.jsc@rcee.org.vn

